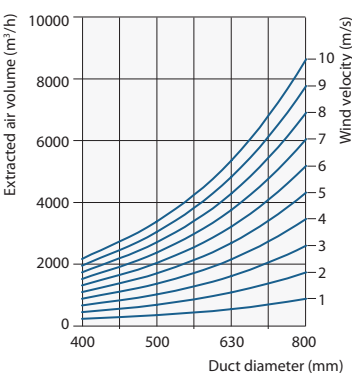
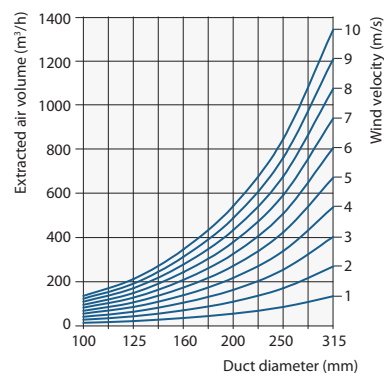
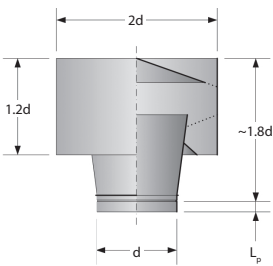
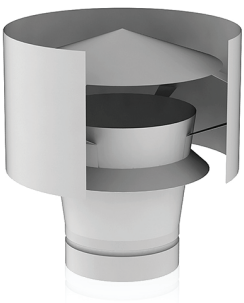


AD

Round roof hood deflector

Round roof hoods are used for natural air extraction from the premises. Deflector connection is made that it can be easily fitted into the duct.
Price factor for products made of AISI-304 stainless steel: $K = 2.5$.



Dimensions, mm		AD-d	
d	L _p	Code	Weight, kg
100	40	354014005	0,75
125	40	354014010	1,10
160	40	354014015	1,80
200	40	354014020	2,80
250	40	354014025	6,10
315	40	354014031	9,50
400	65	354014035	15,40
500	65	354030241	23,90
630	65	354030263	37,70
800	65	354030280	86,40

ORDER EXAMPLE: deflector AD-100.