

AMFR, AMFRN

Kitchen hood with grease filters

AMFRN-d-B-L-H stainless steel.

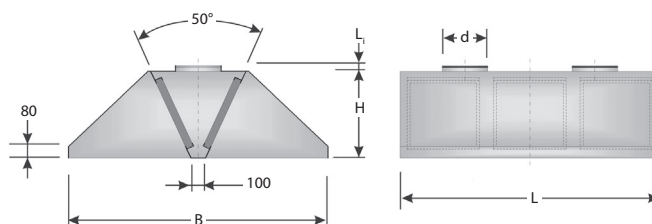
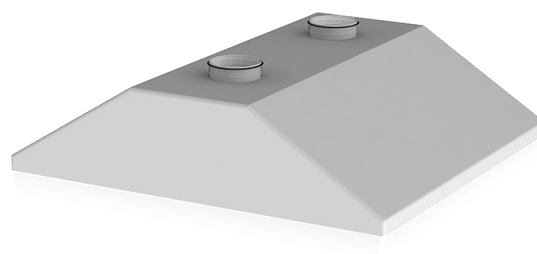
AMFR-d-B-L-H galvanized steel.

$L_1 = 40 \text{ mm}$ (100÷315), $L_1 = 65 \text{ mm}$ (355÷800).

Maximum allowable air flow rate through the grease filter $V_F = 1 \text{ m/s}$.

Sheet joints are riveted.

We recommend to wash grease filters with degreasing agent at least once a week. Soak the filters when they are still hot.



L	d, mm	B, mm	H, mm	Type and number of grease filters, psc.	Air volume, m³/h	Weight with grease filters, kg	Δ Pa, clean-dirty	Code
AMFRN								
900 1200 1500 1800 2100	200	1600	400	RF-212 (×2)	900	31,0	36-97	1021396
	315	1600	400	RF-212 (×4)	1800	42,0	30-91	1021397
	315	1600	400	RF-212 (×4)	1800	49,0	30-91	1021398
	250 (×2)	1600	400	RF-212 (×6)	2700	60,0	35-96	1021399
	250 (×2)	1600	400	RF-212 (×6)	2700	67,0	35-96	1021400
	315	1600	600	RF-222 (×2)	1800	44,0	30-91	1021401
	400	1600	600	RF-222 (×4)	3600	61,0	36-97	1021404
	400	1600	600	RF-222 (×4)	3600	70,0	36-97	1021405
	355 (×2)	1600	600	RF-222 (×6)	5400	87,0	35-96	1021406
	355 (×2)	1600	600	RF-222 (×6)	5400	95,0	35-96	1021407
AMFR								
900 1200 1500 1800 2100	200	1600	400	RF-212 (×2)	900	35,0	36-97	708164194
	315	1600	400	RF-212 (×4)	1800	47,0	30-91	708137619
	315	1600	400	RF-212 (×4)	1800	54,0	30-91	1003460
	250 (×2)	1600	400	RF-212 (×6)	2700	66,0	35-96	1021424
	250 (×2)	1600	400	RF-212 (×6)	2700	73,0	35-96	708154047
	315	1600	600	RF-222 (×2)	1800	49,0	30-91	1021425
	400	1600	600	RF-222 (×4)	3600	67,0	36-97	708130089
	400	1600	600	RF-222 (×4)	3600	76,0	36-97	1021426
	355 (×2)	1600	600	RF-222 (×6)	5400	95,0	35-96	1021429
	355 (×2)	1600	600	RF-222 (×6)	5400	104,0	35-96	708127705

ORDER EXAMPLE: kitchen hood AMFRN-200-1600-900-400.