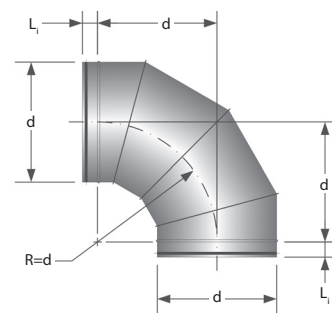
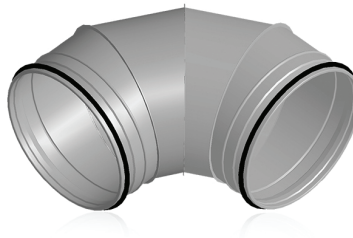


AT-90, ATN-90

Bend 90°

AT-90-d galvanized steel.

ATN-90-d stainless steel.



Dimensions, mm		AT-90 segmented (with gaskets)	
d	$L_1=L_p$	Code	Weight, kg
250	40	353910250	2,0
315	40	353910315	2,4
355	65	353910355	2,9
400	65	353910400	4,0
450	65	353910405	4,1
500	65	353910410	5,1
560	65	353910415	6,4
630	65	353910420	12,0
710	65	353910425	14,0
800	65	353910430	18,0
900	100	353910435	21,0
1000	100	353910440	31,0
1250	100	353910450	42,0

ORDER EXAMPLE: bend AT-90-250, bend ATN-90-250 AISI-304, bend ATN-90-250 AISI-316.