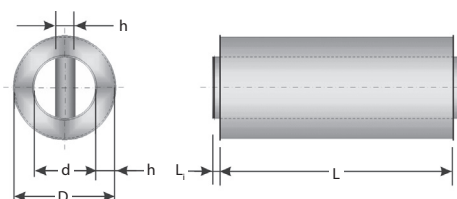
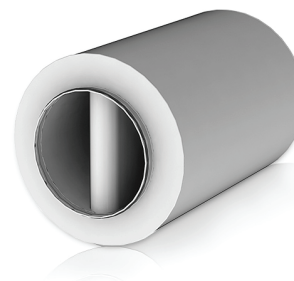


## AVGS

### Circular duct with partition

M – galvanized and perforated sheet metal.



Dimensions, mm			Efficiency S, dB, when frequency F							
d	h	L	63 Hz	125 Hz	250 Hz	500 Hz	1 kHz	2 kHz	4 kHz	8 kHz
315	100	900	5	8	17	30	39	36	25	19
		1200	6	10	21	36	50	47	32	23
400		900	4	6	13	24	31	28	20	15
		1200	5	8	17	30	42	37	26	18
500		900	3	4	10	20	24	21	15	12
		1200	4	6	14	26	34	29	20	15
630		900	2	3	8	17	20	16	12	10
		1200	3	4	11	22	28	23	16	12
710		900	1	2	7	16	18	15	11	9
		1200	2	3	10	20	24	19	13	10
800		900	1	2	7	15	17	14	10	8
		1200	2	3	10	19	21	17	12	9

Dimensions, mm			h = 100 mm			
			L = 900 mm		L = 1200 mm	
d	L <sub>1</sub>	D	Code	Weight, kg	Code	Weight, kg
315	40	515	354273299	17,0	706027241	22,0
400	40	600	706023270	21,0	354273426	27,0
500	40	700	354273444	26,0	354273428	32,0
630	65	830	354273445	32,0	354273366	40,0
710	65	910	706016127	35,0	354273367	45,0
800	65	1000	354273301	40,0	354273284	50,0

ORDER EXAMPLE: circular duct with partition AVGS-630-100-900-M.