

AWFR, AWFRN

Kitchen hood with grease filters

AWFRN-d-B-L-H stainless steel.

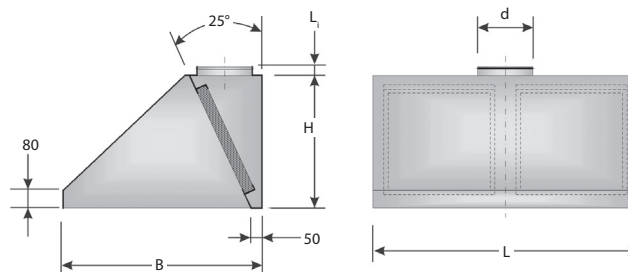
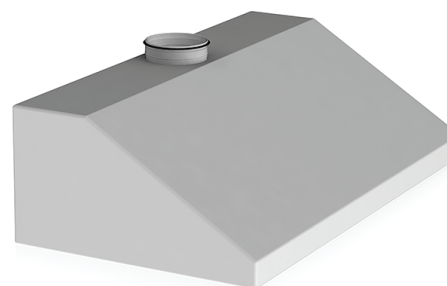
AWFR-d-B-L-H galvanized steel.

$L_1 = 40 \text{ mm}$ (100÷315), $L_1 = 65 \text{ mm}$ (355÷800).

Maximum allowable air flow rate through the grease filter $V_F = 1 \text{ m/s}$.

Sheet joints are riveted.

We recommend to wash grease filters with degreasing agent at least once a week. Soak the filters when they are still hot.



L	d, mm	B, mm	H, mm	Type and number of grease filters, pcs.	Air volume, m³/h	Weight with grease filters, kg	Δ Pa, clean-dirty	Code
AWFRN								
900 1200 1500 1800 2100	160	800	400	RF-212 (×1)	450	14	30-91	708028432
	200	800	400	RF-212 (×2)	900	20	36-97	708083113
	200	800	400	RF-212 (×2)	900	29	36-97	1018026
	200 (×2)	800	400	RF-212 (×3)	1350	36	29-90	708083119
	200 (×2)	800	400	RF-212 (×3)	1350	40	29-90	708100078
	200	800	600	RF-222 (×1)	900	21	36-97	708022976
	315	800	600	RF-222 (×2)	1800	29	30-91	708000022
	315	800	600	RF-222 (×2)	1800	42	30-91	708026941
	250 (×2)	800	600	RF-222 (×3)	2700	52	35-96	708048940
	250 (×2)	800	600	RF-222 (×3)	2700	57	35-96	708000093
AWFR								
900 1200 1500 1800 2100	160	800	400	RF-212 (×1)	450	16	30-91	708100035
	200	800	400	RF-212 (×2)	900	22	36-97	708100022
	200	800	400	RF-212 (×2)	900	32	36-97	708121675
	200 (×2)	800	400	RF-212 (×3)	1350	39	29-90	708128415
	200 (×2)	800	400	RF-212 (×3)	1350	44	29-90	708127702
	200	800	600	RF-222 (×1)	900	24	36-97	708100013
	315	800	600	RF-222 (×2)	1800	33	30-91	1021378
	315	800	600	RF-222 (×2)	1800	46	30-91	708149988
	250 (×2)	800	600	RF-222 (×3)	2700	56	35-96	708128416
	250 (×2)	800	600	RF-222 (×3)	2700	63	35-96	1021385

ORDER EXAMPLE: kitchen hood AWFRN-160-800-900-400.