

CC-JD LP

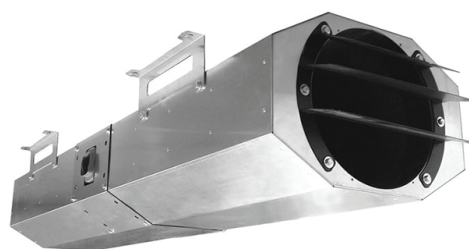
Axial jet fans for car park ventilation

Fans are designed for smoke exhaust 300 °C / 2H.

Axial impulse fans suitable for installation in underground car parks or tunnels, especially designed for fire smoke and hot gases extraction in case of fire and where are strong height limitations.

Technological highlights:

- fan housing made of reinforced galvanised steel,
- the inner surface of the duct is perforated and insulated with mineral wool, thereby ensuring noise inhibition,
- motor meets the IP 55 protection class, insulation class – H.



CC-JD LP (unidirectional) is equipped with a protection guard at the inlet side and a deflector at the outlet.

CC-JD/R LP (reversible) is equipped with a deflector on both sides, which sweeping the entire volume of air to the nearest extraction point.

Model	Maximum air flow, m³/h	Max. current consumption, A	Voltage, V	Power consumption, W	Weight, kg
CC-JD LP 312	4600	1,57	3~ 400	0,75	70,0
CC-JD LP 352	6120	2,36	3~ 400	1,1	75,0
CC-JD/R LP 352	5760	2,49	3~ 400	1,1	75,0
CC-JD LP 402	9680	3,01	3~ 400	1,5	90,0
CC-JD/R LP 402	8640	3,45	3~ 400	1,5	90,0
2 speeds motors					
CC-JD LP 312/4	4600/2260	1,91/0,6	3~ 400	0,8/0,2	70,0
CC-JD LP 352/4	6120/3020	2,49/0,8	3~ 400	1,1/0,25	75,0
CC-JD/R LP 352/4	5760/2880	2,49/0,8	3~ 400	1,1/0,25	75,0
CC-JD LP 402/4	9680/4788	3,54/1,25	3~ 400	1,5/0,37	90,0
CC-JD/R LP 402/4	8640/4320	3,45/1,14	3~ 400	1,5/0,37	90,0

ORDER EXAMPLE: fan CC-JD LP 312.