

CONNECTION OF A KITCHEN HOOD

SOLUTION FOR DOMEKT R VENTILATION UNITS



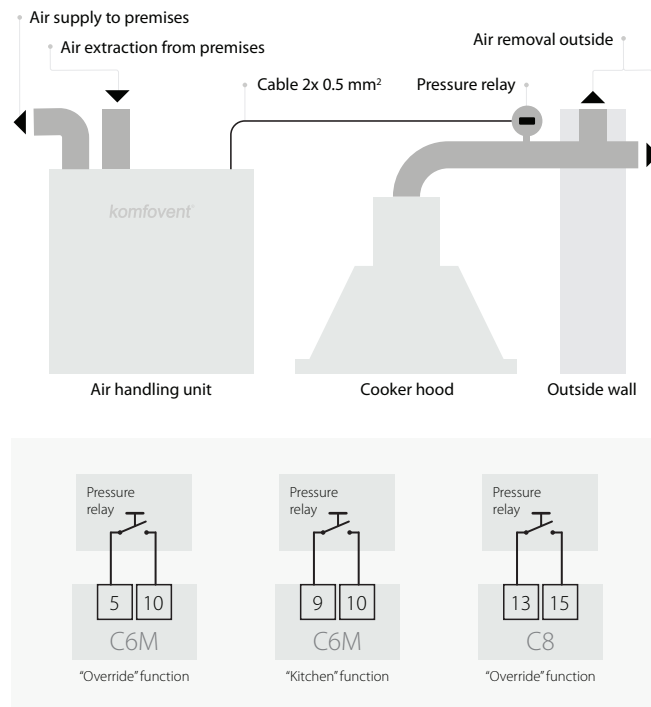
Connection of another brand kitchen hoods with integrated fans to Domekt R units

We recommend connecting only KOMFOVENT kitchen hoods to KOMFOVENT ventilation units. The reasoning behind this is simple: capacity of different brand kitchen hoods may significantly differ from the ventilation unit's capacity. Thus when the kitchen hood has an integrated extraction fan, it can not be used in the same duct system together with an air handling unit and an independent air removal duct is needed. To avoid pressure disbalance in the building during kitchen hood operation, both devices must be synchronized. One of the possible solutions is to connect an additional pressure relay mounted on the hood outlet duct, which will trigger the "Kitchen" or "Override" function automatically when the hood fan is started. The relay is connected via a 2x0.5 mm² cable to the dedicated contacts on the controller board (see the simplified wiring diagram on the right).

IMPORTANT!

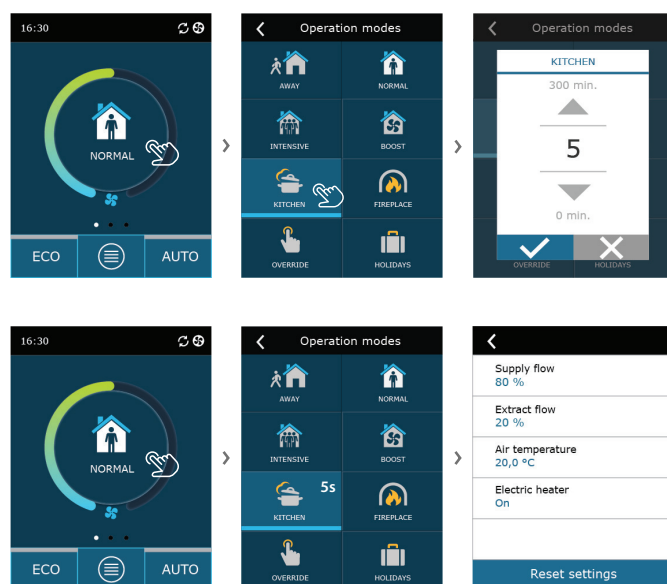
Pressure relay has 2 pressure tubes; one for installation inside the air duct (-), and the other for indoors (+).

NOTE. For more information refer to "Domekt installation manual" or consult professional installers and electricians.



Control of another brand kitchen hood with integrated fan and Domekt R ventilation unit with C6M and C8 automation

The air handling unit automatically starts the "Kitchen" or "Override" function and will adjust fan speeds when a signal from the kitchen hood has been received. However, if no device (pressure relay, switch, or similar) was connected, these functions can be started manually from the control panel or smartphone app by simply pressing a button on the screen and selecting operation time. In addition, if the factory-set air volumes of the air handling unit do not match those of the kitchen hood, they can be adjusted by pressing the same function icon for 5 seconds. A screen with supply and exhaust airflows and other parameters will appear. Users can select supply and exhaust air fan intensities from 20 % to 100 %.



Kitchen hood activation and setting in C6.1 controller and mobile application.

Domekt R – residential ventilation units with rotary heat exchangers

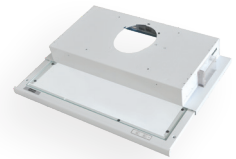
All units in this series have a fifth duct connection intended for additional air extraction. The airflow through this opening is delivered directly to the exhaust fan, bypassing the filters and heat exchanger, therefore ducts from the bathroom, toilet, or kitchen can be connected in cases when there is no additional extraction fan in these premises.



KOMFOVENT offers two models of kitchen hoods:

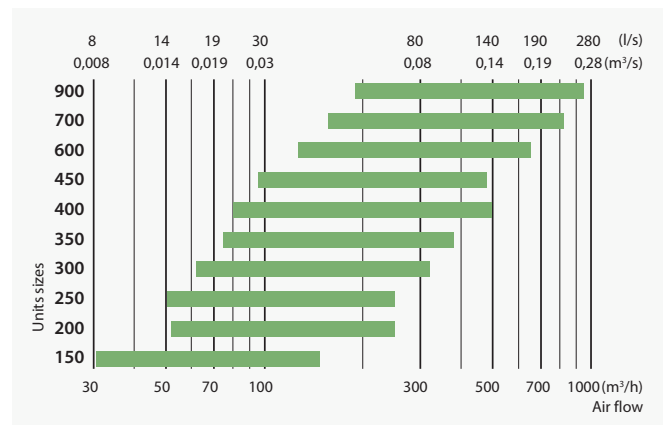


Monolith kitchen hood with LED lights (stainless steel or white)



Slim telescopic kitchen hood (white)

Sizes and capacities of Domekt R units



Domekt R 200 V C8 ventilation unit with integrated kitchen hood

This unit performs 2 functions:

- Ventilates premises. Supplies clean air, removes dirty air and recovers heat.
- Removes dirty air from the stove and maintains air balance in the premises.

Air distribution box OSD – a space-saving solution for Domekt R 200 V C8 unit

If space in the kitchen cabinets is limited and vertical duct connection is not possible, the air distribution box OSD can be connected on top of the R 200 V unit. This box allows easy changing of duct connections from vertical to horizontal.

KOMFOVENT air distribution box:

- OSD R 200 V C8 (E1) (125 mm)

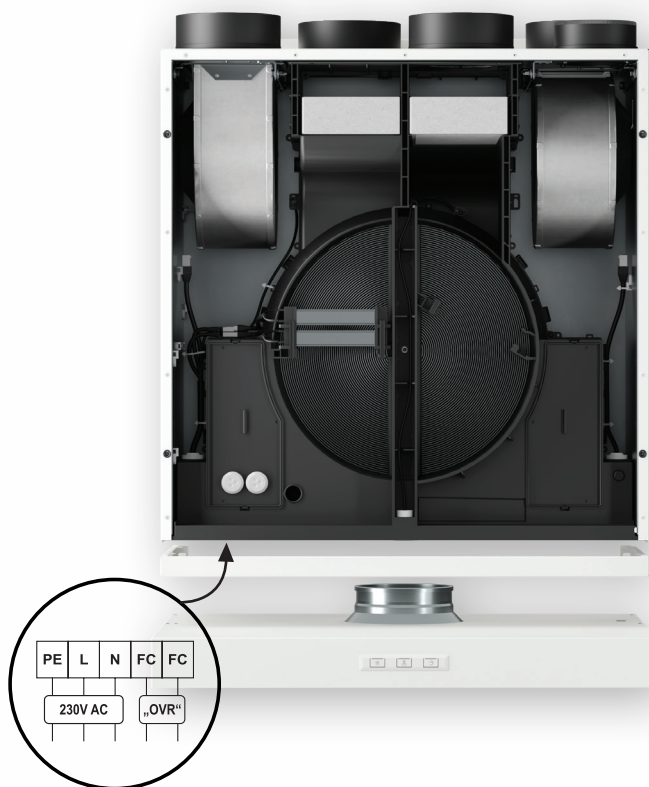


Connecting the KOMFOVENT kitchen hood to Domekt R 200 V C8

Domekt R 200 V is designed for direct connection with a kitchen hood as a space-saving solution. In such a way air handling unit together with the hood can be installed directly into the kitchen cabinet above the cooking hob. Connect Komfovent kitchen hood cables directly to prepared connection terminals inside of the R200V unit and no additional cables or power sockets will be needed (for more information see "Domekt installation manual").

Control

Supply and exhaust airflows are factory-set and the user does not need to change any settings for the kitchen hood operation. Once the kitchen hood is switched on, the "Override" function of the R200V unit is automatically activated and works until the kitchen hood timer runs out. With the activation of this function, the current ventilation intensity is changed to 80 % for both fans, thus more air is extracted through the hood and more air is supplied to keep a perfect air balance inside of the premises. Unquestionably, users can adjust the "Override" function's intensity at any time from the control panel or smartphone app.



Connecting the KOMFOVENT kitchen hood to other Domekt R units

Recommended mounting distance between a kitchen hood and ventilation unit is not more than 3-5 meters. Larger installation distance is also allowed, however, the larger the distance, the lower the performance of the kitchen hood, meaning that less steam and unwanted odours will be removed from the stove. All houses and needs are different, therefore we suggest consulting with professionals prior to installation.

NOTE. When operating the kitchen hood at low outdoor temperatures, temperature of the supply air may be reduced.

Kitchen hood and unit controller must be connected with a 2×0.5 mm² cable. Plug one end of the cable to a dry/relay contact of the kitchen hood, and the other - to the contacts of the ventilation unit controller ("Override" function contacts should be used in this case).

IMPORTANT!

Do not connect voltage to the above-specified contacts.

Komfovent Control App



It is a cloud-based application for controlling units with C6M and C8 automation. User-friendly interface enables fast and intuitive navigation.

This mobile application offers the same control functions and parameter monitoring capabilities as a remote controller.

Download from Google Play and App Store.

