

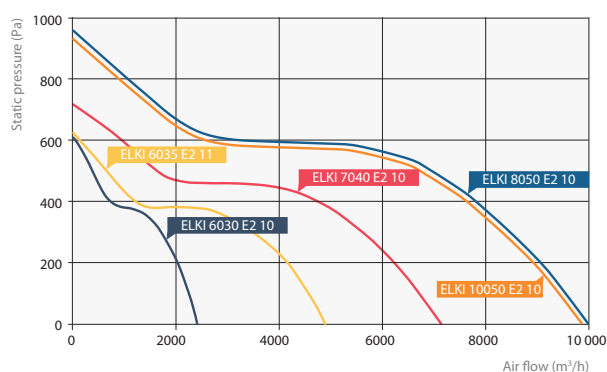
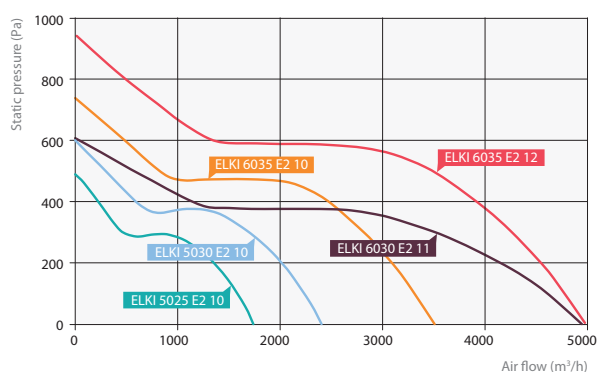
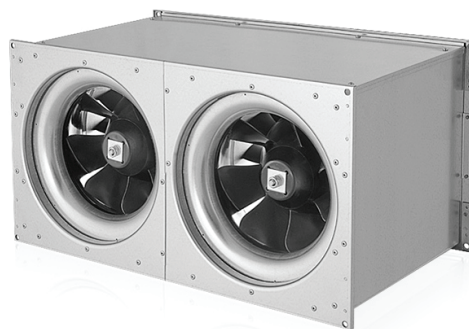
ELKI

Circular duct acoustically insulated fan

Fans housings made of galvanized steel sheet.

Technological highlights:

- speed controllable,
- fan section removable,
- integrated thermal protection,
- motor meets the IP 54 protection class, insulation class – F.



Model	Max. current consumption, A	Voltage, V	Power consumption, W	Code	Weight, kg
ELKI-5025 E2 10	1,0	1~ 230	183	721500072	13,4
ELKI-5030 E2 10	1,7	1~ 230	282	721500073	16,5
ELKI-6030 E2 10	1,7	1~ 230	282	721500074	17,5
ELKI-6030 E2 11	3,3	1~ 230	567	721500075	25,6
ELKI-6035 E2 12	5,2	1~ 230	937	721500076	27,5
ELKI-6035 E2 11	3,3	1~ 230	562	721500077	26,4
ELKI-6035 E2 10	3,2	1~ 230	547	721500078	25,2
ELKI-7040 E2 10	6,6	1~ 230	1043	721500079	41,6
ELKI-8050 E2 10	10,6	1~ 230	1889	721500080	48,7
ELKI-10050 E2 10	10,2	1~ 230	1840	1021819	53,0

5 steps motor rotation speed controller
RV-1.5
RV-2.2
RV-2.2
RV-4.0
RV-7.0
RV-4.0
RV-4.0
RV-11.0
RV-14.0
RV-14.0

ORDER EXAMPLE: fan ELKI-5025 E2 10.