

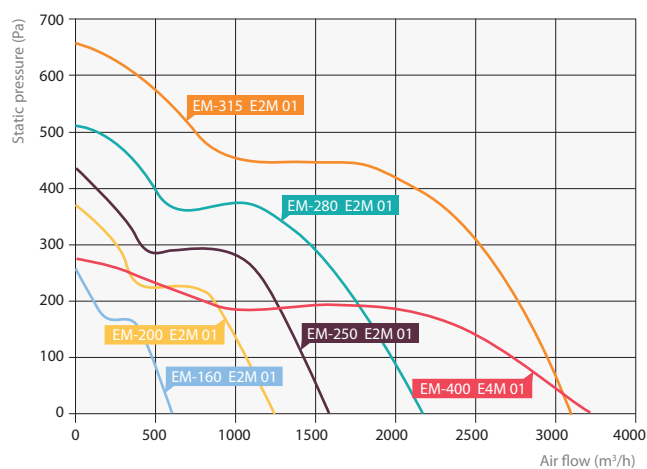
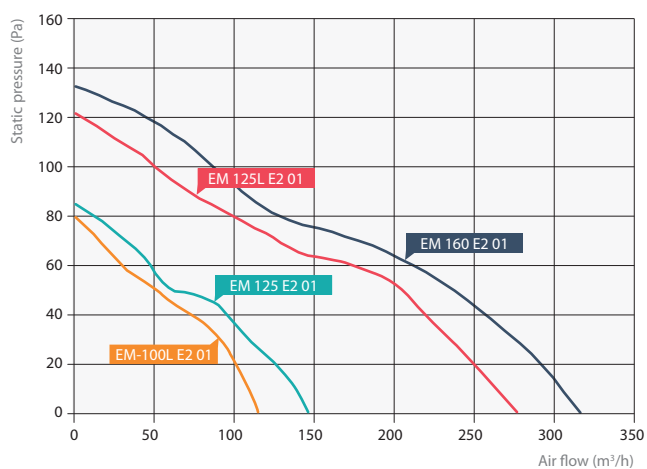
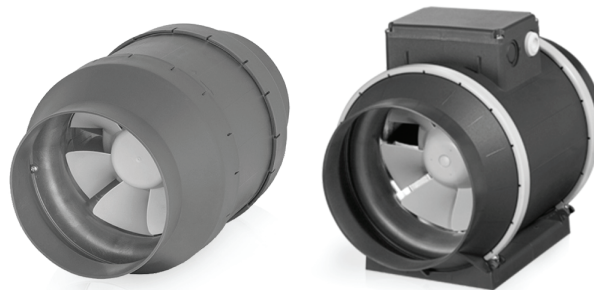
EM

Round tube fan

EM fan housing made of plastic.

Technological highlights:

- 3 steps motors
(except EM-100L E2 01; EM-125 E2 01; EM-125L E2 01; EM-160 E2 01),
- integrated termo protection.



Model	Max. current consumption, A	Voltage, V	Power consumption, W	Code	Weight, kg
EM-100L E2 01	0,21	1~ 230	13	722000284	0,8
EM-125 E2 01	0,22	1~ 230	14	722000285	0,7
EM-125L E2 01	0,29	1~ 230	31	722000286	1,2
EM-160 E2 01	0,29	1~ 230	31	722000287	1,0
EM-160L E2M 01	0,29	1~ 230	45	722000233	2,5
EM-200 E2M 01	0,58	1~ 230	117	722000234	4,0
EM-250 E2M 01	0,81	1~ 230	170	722000235	5,7
EM-280 E2M 01	1,1	1~ 230	239	722000238	7,7
EM-315 E2M 01	2,1	1~ 230	436	722000239	12,4
EM-400 E4M 01	1,0	1~ 230	211	722000236	15,7

3 steps switches
-
PJ-4

ORDER EXAMPLE: fan EM-100L E2 01.