

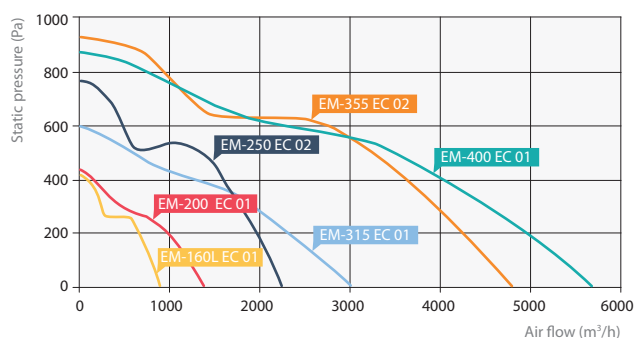
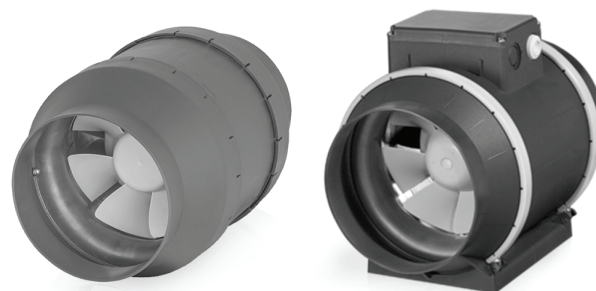
EM-EC

Round tube fan

EM-EC fan housing made of plastic.

Technological highlights:

- EC motor, integrated control automation,
- Integrated thermo protection.



Model	Max. current consumption, A	Voltage, V	Power consumption, W	Code	Weight, kg
EM-160L EC 01	0,65	1~ 230	73	1021796	2,6
EM-200 EC 01	1,0	1~ 230	121	1021797	3,2
EM-250 EC 02	2,1	1~ 230	304	722000247	4,1
EM-315 EC 01	2,0	1~ 230	282	722000277	6,9
EM-355 EC 02	3,4	1~ 230	731	722000270	9,8
EM-400 EC 01	3,4	1~ 230	729	1021798	11,6

ORDER EXAMPLE: fan EM-160L EC 01.

EC fans potentiometer
EC-10