

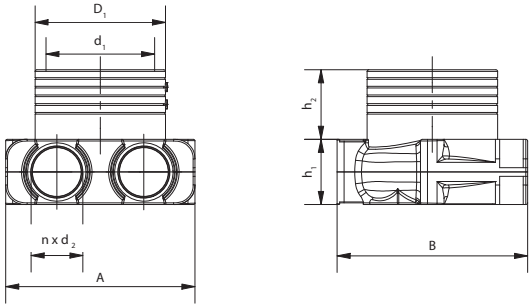
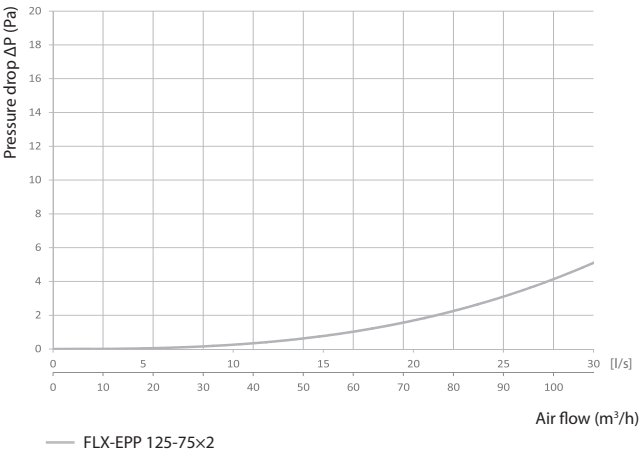
FLX-EPP

Diffuser connection box

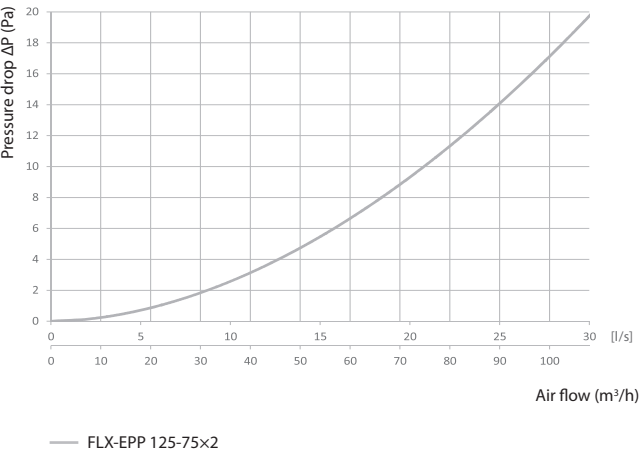
Connection boxes are made of expanded polypropylene (EPP), used for connecting air supply and air exhaust distributor.
The material used allows obtaining an aerodynamic shape of the inside of the box which leads to low air resistance.



Pressure drop charts for the supply air to the room



Ištraukiamo oro iš patalpos slėgio kritimo diagrama



Model	A, mm	B, mm	h1, mm	h2, mm	D1, mm	d1, mm	n, vnt.	d2, mm	Code
FLX-EPP 125-75x2	217,5	219	75	155	150	125	2	75	1088652

ORDER EXAMPLE: diffuser connection box FLX-EPP 125-75x2.