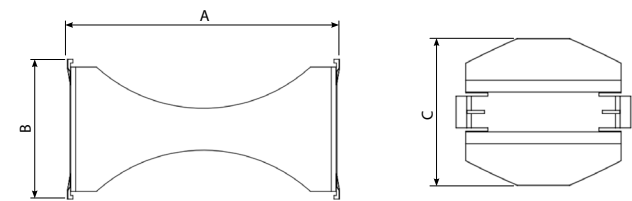


HJ-PLOK

Horizontal coupling

Horizontal coupling is used to connect two or more distribution boxes PLOK 75×10 horizontally. Used when the 10 pipe slots available in a single distribution box are insufficient for air distribution as designed.



Model	Dimensions, mm			Code
	A	B	C	
HJ-PLOK	216	110	92	1156988