

# LOND, LOD

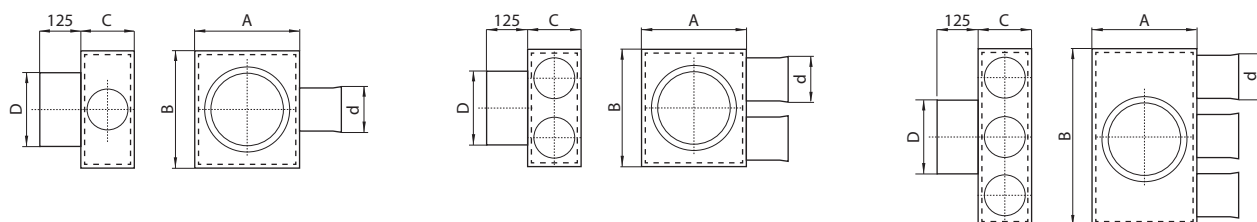
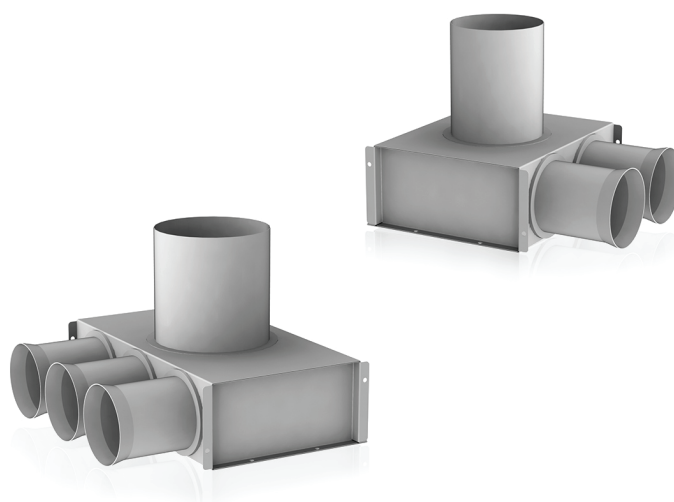
## Diffuser connection box

LOND connection boxes are used for air supply and exhaust diffuser connection, made from galvanized steel.

Boxes are assembled with plastic PAT-75 duct connections. On demand PAT-75 can be changed to PAT-90.

D – duct diameter.

Where flexible ducts and other components are connected, it is highly recommended to use sealing rings.



Model	Dimensions, mm					Code
	D	d	A	B	C	
LOND-V-100-75×1	100	75	180	160	90	1023047

Model	Dimensions, mm					Code
	D	d	A	B	C	
LOND-V-100-75×2	100	75	180	220	90	1023049
LOND-V-125-75×2	125	75	180	220	90	1023050

Model	Dimensions, mm					Code
	D	d	A	B	C	
LOND-V-125-75×3	125	75	180	315	90	1023051
LOND-V-160-75×3	160	75	180	315	90	1023052