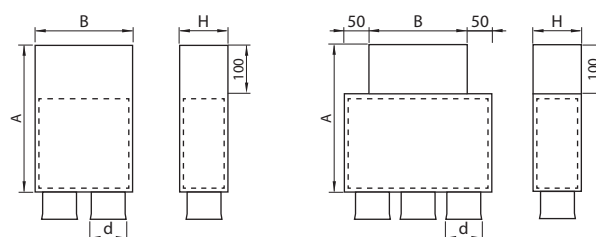
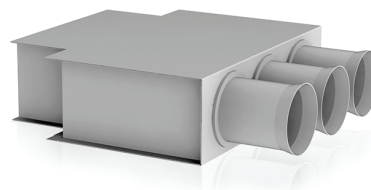
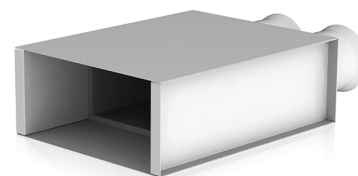


## LONG, LOG

### Grill connection box

LOG-H boxes are used for air supply or exhaust grille connection, made from galvanized steel.

Boxes are assembled with PAT-75 connections. On demand PAT-75 can be changed to PAT-90.



Model	Dimensions, mm			Code
	B × H	d	A	
LONG-H-200×100-75×2	200×100	75	300	1023053
LONG-H-200×100-75×3	200×100	75	300	1023054