

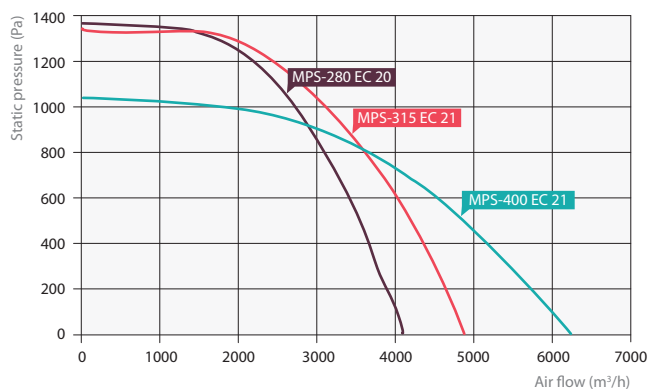
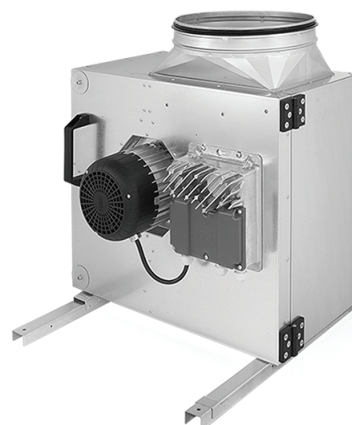
# MPS-EC

## Centrifugal kitchen fan

Fans housings made of aluminum AlMg3.

Technological highlights:

- EC motor, integrated control automatic,
- maximum air temperature 120 °C,
- motor meets the IP 54 protection class, insulation class – F.
- the motor is not directly exposed to air flow,
- with fat/condensate collection tray.



Model	Max. current consumption, A	Voltage, V	Power consumption, W	Code	Weight, kg
MPS-280 EC 20	5,7	1~ 230	1246	723300667	38,1
MPS-315 EC 21	6,3	1~ 230	1385	723300671	49,0
MPS-400 EC 21	6,1	1~ 230	1342	1021855	64,0

EC fans potentiometer
EC-10

ORDER EXAMPLE: fan MPS-280 EC 20.