

# OD-11

## Variable swirl diffusers

Used in rooms with a height of 3 to 10 m.

Suitable for large temperature differences between supply and indoor air.

The inner part of the diffuser body allows for the creation of *Coanda effect*.

Standard color of products is white (RAL 9010).

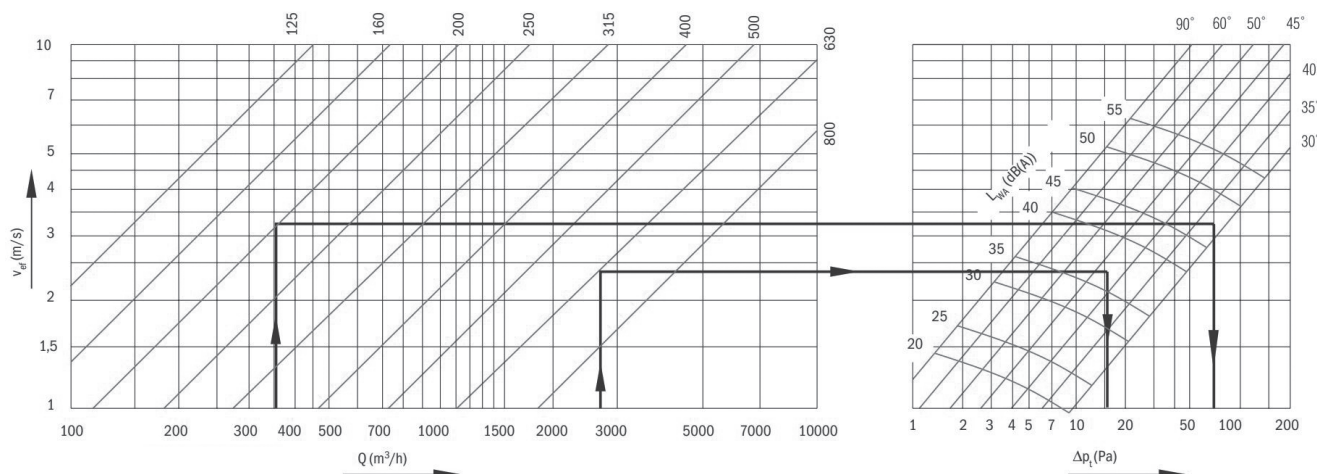
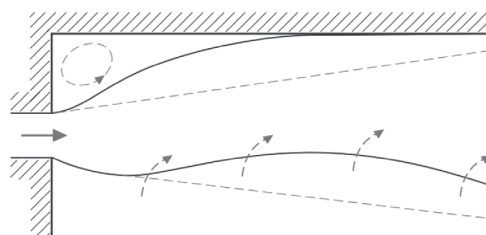
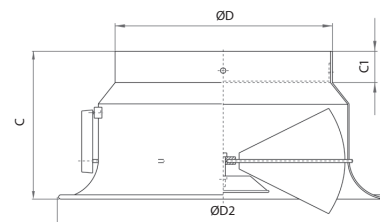
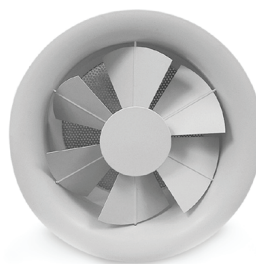
Made of aluminum.

The OD-11 rotation angle is manually adjustable of each blades.

OD-11V / TR swivel angle adjustable thermostat.

When air is supplied parallel to the surface (e. g. ceiling), negative pressure is created between the air stream and the ceiling, due to current can "stick" to the ceiling. This is called the *Coanda effect*.

This effect is very important, especially in the supply of cooled air.



Size	Effective area, m <sup>2</sup>	Dimensions, mm				OD-11	OD-11V/TR
		ØD	ØD2	C	C1	Code	Code
200	0,030	200	310	174	40	1024297	1024305
250	0,048	250	400	200	40	1024299	1024306
315	0,077	315	480	240	40	1024300	1024307
400	0,125	400	615	265	55	1024302	1024308
500	0,195	500	790	320	60	1024303	1024309
630	0,310	630	940	380	80	1024304	1024310

ORDER EXAMPLE: diffuser OD-11-200.