



reddot winner 2023

Frameless  
ventilation diffuser  
for stylish  
drywall ceiling



**ERGOVENT**

*Perfect down  
to the smallest detail!*



## A modern ceiling element

ERGOVENT ventilation diffusers are made out of gypsum. It is integrated into the drywall ceiling, then finished and painted with the same paint and colour as the ceiling. Only a minimalistic ring-shaped slot for the airflow remains visible.

- ✓ No visible edges!
- ✓ The ceiling is smooth and well-integrated!

The gypsum body fits perfectly into the ceiling. No seams are visible!



The cap is easy to remove, making maintenance simple.



Polyurethane dampers are used to adjust the airflow.





## Installation

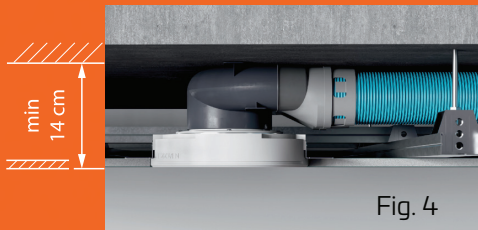
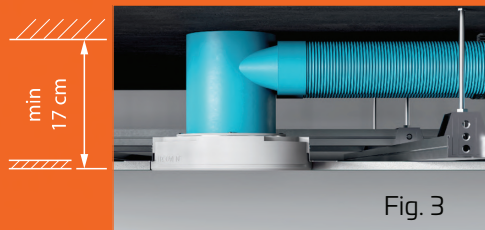
- ✓ The installation of the ERGOVENT diffusers is clear, simple and quick.
- ✓ The diffusers can be integrated even if the plasterboard is already installed.



- ✓ These diffusers are suitable for all air duct systems with standard connection diameters: 100 mm, 125 mm, 150 or 160 mm.
- ✓ If metal ventilation air ducts are installed, the diffusers can be connected directly to the air duct (Fig. 1) or via a soft flexible duct (Fig. 2).

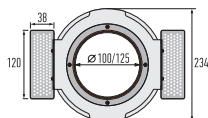
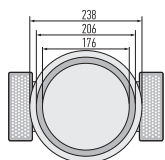


- ✓ If the ventilation air ducts are plastic (75 mm or 90 mm in diameter), the diffusers are installed as follows:
  - via standard plenum boxes (17 cm of space will be required) (Fig. 3);
  - 14 cm of space may be enough when using low-profile plenum boxes (Fig. 4).

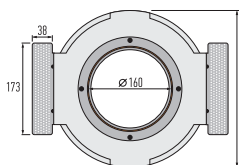
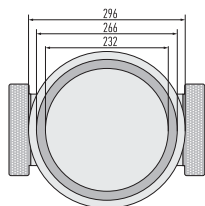
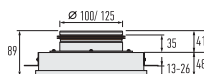


- ✓ ERGOVENT is a thoughtfully designed and perfected product, chosen by specialists for its convenient installation and reliable technical parameters. Its stylish design, quiet and safe operation is also appreciated by the users.
- ✓ The central cap is securely held in place by magnetic holders, with its entire surface adhering to a steel ring in the cap.
- ✓ Standard diffusers direct the airflow towards the ceiling, resulting in the accumulation of dirt around the diffuser. In contrast, the ERGOVENT diffusers direct the airflow directly downwards, preventing the accumulation of dirt as the air does not come into contact with the ceiling.
- ✓ The side fasteners can easily be adapted for use with single, double layer or custom width of plasterboard. Attaching them to a plasterboard can be done simply and quickly using self-tapping screws.
- ✓ The diffusers are suitable for both air supply and exhaust.

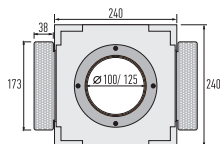
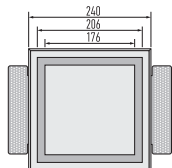
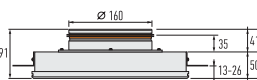
	<b>RONDO-100</b>	<b>RONDO-125</b>	<b>RONDO-160</b>	<b>KVADRO-100</b>	<b>KVADRO-125</b>
Duct connection diameter	100 mm	125 mm	160 mm	100 mm	125 mm
Shape	Round	Round	Round	Square	Square
Recommended airflow per diffuser (supply)	up to 80 m <sup>3</sup> /h	up to 80 m <sup>3</sup> /h	up to 100 m <sup>3</sup> /h	up to 80 m <sup>3</sup> /h	up to 80 m <sup>3</sup> /h
Recommended airflow per diffuser (exhaust)	up to 95 m <sup>3</sup> /h	up to 95 m <sup>3</sup> /h	up to 120 m <sup>3</sup> /h	up to 95 m <sup>3</sup> /h	up to 95 m <sup>3</sup> /h



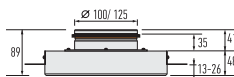
**RONDO-100 / RONDO-125**



**RONDO-160**



**KVADRO-100 / KVADRO-125**



**RONDO**



**KVADRO**



[www.ergovent.co.uk](http://www.ergovent.co.uk)  
[www.ergovent.com](http://www.ergovent.com)