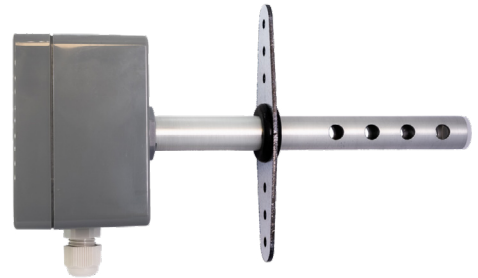


SCD

DUCT MOUNTED CO₂, HUMIDITY AND TEMPERATURE SENSOR

AQ ventilation intensity control option depends on the external sensor signal. Provides ventilation intensity correction according to the increased CO₂, humidity level, etc. A different AQ function may be set depending on the sensor type, therefore, the intensity of the unit will be regulated accordingly. User can activate this function anytime according to the demand and can also observe the premise's air quality on the panel. This function is possible for all the units with EC fans just by connecting one of the sensors listed below.



Type	Parameters	Code
Duct mounted CO ₂ , humidity and temperature sensor „SCD“	<ul style="list-style-type: none"> • Supply voltage: 24 Vac / 24 Vdc ±20 % • CO₂: 0..2000 ppm • Relative humidity: 0 % ... 100 % • Temperature: 0 °C ... 50 °C • 2 selectable output signals: 0..10 V • RS-485 Modbus interface • Relay output for on/off control • Adjustable setpoint for VAV control • Protection class: IP65 • Dimensions: 82 × 80 × 54 (208) mm 	1111276