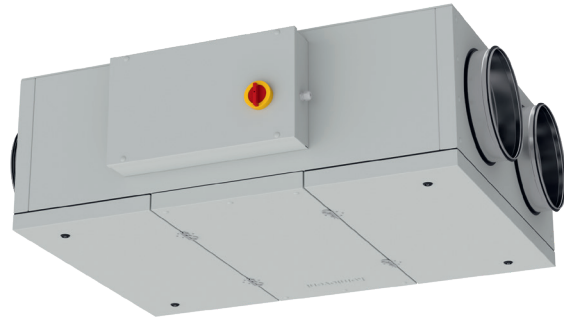


Verso R 1000 F C5

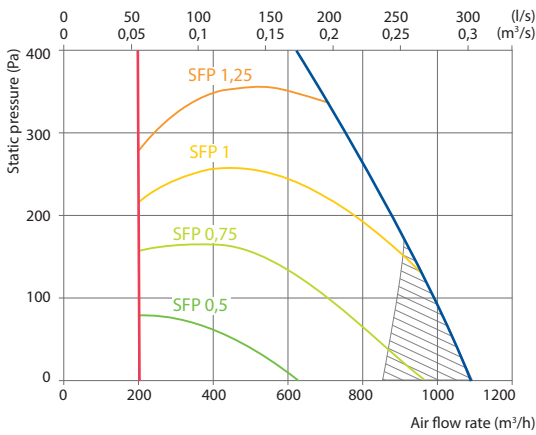
NEW

| | |
|---|---------------|
| Nominal air flow according to ErP 2018, m ³ /h | 890 |
| Nominal air flow according to ErP 2018, l/s | 247 |
| Electric air heater capacity, kW / Δt, °C | 3/8,9 |
| Supply voltage HE, V | 3~400 |
| Supply voltage HW, V | 1~230 |
| Maximal operating current HE, A | 8,5 |
| Maximal operating current HW, A | 4,5 |
| Power supply cable E, mm ² | 5×1,5 |
| Power supply cable W, mm ² | 3×1,5 |
| Electric power input of the fan drive at maximum flow rate, W | 267 |
| Noise power level, L _{WA} , dB(A) | 55 |
| Noise pressure level, L _{PA} , dB(A), (3 m) | 44 |
| Filters dimensions B×H×L, mm | 410×420×46 |
| Supply filter class | ePM1 60 (F7) |
| Exhaust filter class | ePM10 50 (M5) |
| Unit dimensions B×H×L, mm | 940×480×1360 |
| Panel thickness, mm | 50 |
| Maintenance space, mm | 400 |
| Unit weight, kg | 140 |



Performance

Verso R 1000 F with standard equipment



Temperature efficiency

| Outside temperature, °C | Winter | | | | | Summer | | |
|--------------------------|--------|------|------|------|------|--------|------|------|
| | -23 | -15 | -10 | -5 | 0 | 25 | 30 | 35 |
| After heat exchanger, °C | 14 | 15,4 | 16,3 | 17,2 | 18,1 | 22,5 | 23,4 | 24,3 |

Indoor +22 °C, 20 % RH

Hot water duct air heater *

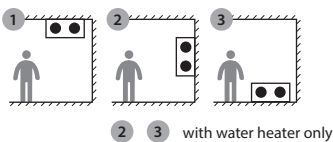
| Water temperature in/out, °C | Winter | | |
|-------------------------------|-----------|-------|-------|
| | 80/60 | 70/50 | 60/40 |
| Capacity, kW | 2,4 | 2,4 | 2,4 |
| Flow rate, dm ³ /h | 106 | 106 | 106 |
| Pressure drop, kPa | 2,4 | 2,4 | 2,4 |
| Temperature in/out, °C | 14 / 22,0 | | |
| Maximal capacity, kW | 9,9 | 8,0 | 6,1 |
| Connection, " | ½ | | |

* Option

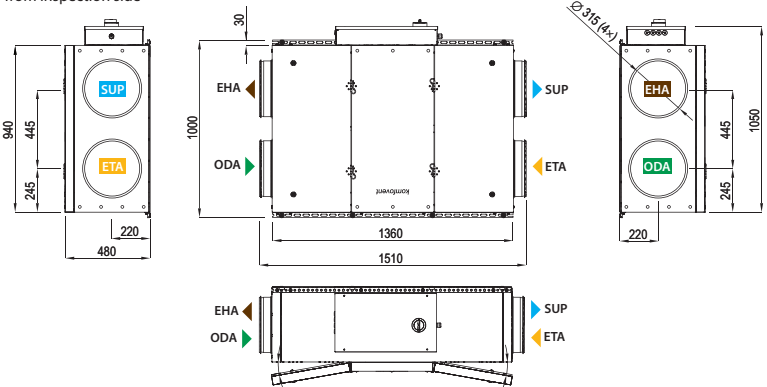
Accessories

| | |
|--------------------------------|----------------------------|
| Closing damper | AGUJ-M-315+LF24/LM24 |
| Silencer | ODA/EHA AGS-315-100-900-M |
| | SUP/ETA AGS-315-100-1200-M |
| Water heater | DH-315 |
| PPU | PPU-HW-3R-15-1,0-W2 |
| Water cooler | DCW-1,2-8 |
| Water heater-cooler | DHCW-315 |
| 2-way valve | VVP47.15-2,5+SSF161.05HF |
| Ducted DX cooler | DCF-1,2-8 |
| Cooling unit for ducted cooler | MOU 24HFN8a+KA8142 |

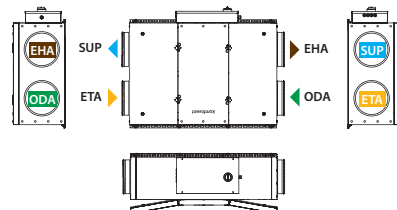
Mounting positions



Shown as right (R1)
View from inspection side



Shown as left (L1)



▶ ODA – outdoor intake ▶ SUP – supply air ▶ ETA – extract indoor ▶ EHA – exhaust air